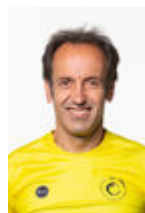


07-07-2012 / XXXI Bandera Noble Villa de Portugalete - Puntuable

	Club	Temp	Dif	%	Points
8	ASTILLERO - REPSOL ELECTRICIDAD Y GAS	21:11,68	00:44.63	103.63%	5



Coach  
JON  
**SALSAMENDI**



Délegué  
JOSE EMILIO  
**COLLANTES**

Firma y sello

**Supleánts**

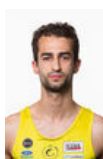


Remeur / patron  
**BARLOS**  
**SALSAMENDI**

Non propre



UGAITZ **MENDIZABAL**  
Non propre



**Formé:5**

**Prope: 3**

**Non propre: 6**